



# Software Release Notice

## Version 7.6

Build 356

25 January 2010



with commitment comes success

Software version msXfax 7.6  
Build 356  
25 January 2010

## Software Release Notice (SRN)

© Copyright 2010 Better Network Services Group Pty Ltd, all rights reserved.

Better Network Services Group Pty Ltd (BNS Group) ABN 54 003 868 120

The software described in this Guide is supplied under a license agreement and may only be used in accordance with that agreement.

msXfax-Lite™, msXfax® msXfax<sup>XP</sup>™, and Enotify-AI™ are trademarks or Registered Trademarks of Better Network Services Group Pty Limited (BNS Group). Other brands or product names are trademarks or registered trademarks of their respective holders.

Trademark acknowledgements:

- Microsoft® is a registered trademark of Microsoft Corporation Inc.
- Exchange Server is a Trademark of Microsoft Corporation Inc.
- Windows®, Windows 2008®, Windows 2000®, Windows 2003® and Windows XP® are registered trademark of Microsoft Corporation Inc.
- Acrobat® is a registered trademark of Adobe Systems Inc.
- Eicon and Diva Server and trademarks of Eicon Networks Inc / Dialogic Inc.

**Dialogic**  
Application Partner

## Table of Contents

---

<b>1</b>	<b>Software Release Notice 7.6 build 356</b>	<b>4</b>
1.1	Availability & download information	4
1.2	Summary of enhancements in version 7.6 build 356	4
1.3	Summary of enhancements in version 7.6 build 355	5
1.4	Summary of enhancements in version 7.6 build 350	6
1.5	Summary of enhancements in version 7.6 build 339	7
1.6	Upgrade notes and considerations	10
1.6.1	Before you start the upgrade	10
1.6.2	Upgrade Eicon Drivers	10
1.6.3	Upgrade msXfax installation files	10
1.6.4	Upgrade msXfax with the MSXSETUP.EXE	10

---

# 1 Software Release Notice 7.6 build 356

## 1.1 Availability & download information

---

Version 7.6 released build 356 release date: 25 January 2010.

Download location: BNS web site

## 1.2 Summary of enhancements in version 7.6 build 356

---

Release 7.6.0 (Build 356) 25 January 2010

-----

Build 356 is a general release. Build 355 was not released generally so you should review all changes inclusive of build 355 below.

Additions to 355 to make build 356

- Updated FaxFail.htm and FaxEpmFail.txt templates
- Updated Documentation
- Included support for TIFF file attachments.
- Updated msXfax UI with new Email Protective marking reference to ISM not ACSI33.
- Some minor changes to email protective marking parsing.
- Exchange 2010 support

## 1.3 Summary of enhancements in version 7.6 build 355

---

Controlled Release 7.6.0 (Build 355) 12 Dec 2009

-----

**Build 355 is a controlled release to selected customers.** It addresses a major problem described in BNS Technical Bulletin 19 Nov 2009 (Copy the link text below into your browser, if you click on the link in Acrobat it may not work - Adobe bug)

[http://mycusthelp.com/BNSGROUP/\\_cs/AnswerDetail.aspx?sSessionID=&inc=735&caller=%7e%2fFindAnswers.aspx%3ftxtCriteria%3dtechnical+bulletin%26sSessionid%3d](http://mycusthelp.com/BNSGROUP/_cs/AnswerDetail.aspx?sSessionID=&inc=735&caller=%7e%2fFindAnswers.aspx%3ftxtCriteria%3dtechnical+bulletin%26sSessionid%3d)

- **Re-architected components of msXfax to circumvent a Microsoft problem described in Technical Bulletin 19 Nov 2009.**
- **Fixed OLE automation issue (dialog box related)**
- **New msxfax System Test Service**
  - Provides an automated system test tool to check system integrity on a periodic basis.
- **Updated msXfaxroutingengine.exe**
  - New msxfaxroutingEngine.exe with new smart hosts to handle Microsoft change of dropping Custom X Headers in all mime attachments via domain addressing.
  - Domain addressed messages are now accepted via the new smart host and passed directly via disk to a modified msxverify.exe that authenticates the sender.
  - msxverify.exe still pulls down messages from the msxfax mailbox as well.
- **Updated msXverify.exe**
  - Modified msxverify.exe handles domain addressed files from the routing spooler directory as well as from the msxfax mailbox.
- **Updated msXfaxout.exe**
  - msxfaxout.exe changed to drop any \*.eml files found in the attachment list. Occasionally an original.eml is created in the attachemnt list even though its not a specified attachment by the sender. Possibly caused by a POP3 error or POP3 sdk.
  - msxfaxout.exe changed to drop png & gif files found in auto-signatures but still allow the message to be processed.
- **Updated All routines using Easymail SDK**
  - Upgraded to Easymail 6.5 SDK with patches
  - Fixed SMTP related problem where long files names in attachments were not sent correctly back to Exchange.
- **Updated msXfaxout.exe**
  - Support Acrobat 9. Needed to monitor and terminate Acrobat.exe after a render because task would not terminate. Note Acrobat 7 and 8 still supported.
  - Fixed a bug where mime files from Exchange 2007 with X-Headers x-tm-as-user-approved-sender: No AND x-tm-as-user-blocked-sender: No would

cause the parser in msXfaxout.exe to identify the wrong sender. This was caused by Exchange Anti Virus X-headers being interpreted as being msXfax related.

- Fixed a rare problem during rendering of Excel Documents on Office 2003/Office 2007 systems where the Microsoft registry setting to suppress launching of the mspview.exe application after printing to the MODI printer is not honoured. The mspview app locks the rendered tif attachment causing the msxfax render process to fail. All subsequent renders also fail while the mspview.exe app stays active in background.
- Patch msXfaxout.exe and msXconv.exe (Multi converter systems) to kill mspview.exe process if running prior to taking and processing rendered tif file.
- Fixed problem where sending a freeform fax from a user whose email address contains an \_ resulted in a failed AD Lookup for the Sender because the \_ was stripped prior to the AD Lookup.
- **Updated AD Routines**
  - Fixed bug where if AD could not be contacted an indefinite wait would occur consuming CPU.

## 1.4 Summary of enhancements in version 7.6 build 350

---

Release 7.6.0 (Build 350) July 2008

-----

- Fixed a bug in msXfaxout.exe and msxconv.exe (multi-converter version) to stop duplicating a tif file attachment when there are multiple recipients. The second recipient onwards would get a doubling up of the attachment. This would only happen if there was a single tiff file attachment.
- Improve performance delivery of inbound faxes by handing off large multipage faxes to the msXorphan.exe process to split up according to inbound message limit sizes and send to users. Previously when incorporated with msxfaxinRX.exe this would slowdown inbound flow and be an issue on busy inbound systems. Patch to msXfaxINRX.exe and msXorphan.exe.
- Include Support for Traditional Fax Receipt which includes Sender Company, Fax Details and scaled first page of sent fax all on a single tif page. Changed : msxfaxXP.exe, msXfaxInTX.exe, msXimage.dll, msxsetup.exe
- Extended the Canon Image Real Capture (IRC) support to look at sub-directories on the IRC output directory. The subdirectory names should be numeric and are used as the ddi value for the new inbound fax. For reference setting IRC support is as follows :
- Support Canon Image Real Capture (IRC). IRC will accept a multi-page tif files with special bar code separator pages in them and split them up accordingly into an output directory. msXfax Image Real Capture service if configured will read this output directory and artificially create inbound fax transactions. These Fax transactions will follow normal processing. In order to activate this functionality create a C:\irc.txt in the root of C:, run the msxsetup.exe and a new service msXfax Image Real Capture will be created. Once installed run

msxfax console, select Global Fax Settings, select Special Handling of inbound Faxes, create a record in the database to route inbound faxes with a specific DDI assigned for IRC to a local directory. Make this directory the Input directory for IRC (see IRC Configuration).

- Run Regedit and select HKEY\_Local\_Machine\Software\Better Network Services Group\msXfax XP\Image Real Capture Pickup. Set the Pickup Directory to the Output directory of Image Real Capture, set the CSID to what ever you prefer, and set the DDI to a new value that must not be the same as the DDI assigned to IRC. (A loop will occur if this is done). Start all services up.
- Place a catch-all test for CSID to drop any characters not in the a-z, A-Z, 0-9 + range. This was done for ATO. Patch to msxfaxInRX.exe
- Handle issue created in Exchange 2007 where multiple recipients via domain addressing are dropped. This was due to duplicate X-Headers not being supported in Exchange 2007 but was in Exchange 2003.

## 1.5 Summary of enhancements in version 7.6 build 339

---

BNS Group is committed to ongoing enhancements of msXfax XP for Microsoft Exchange Server. BNS Group has been developing and selling Microsoft based fax solutions since 1990.

The following is a summary of changes and enhancements implemented in version 7.6:

Release 7.6.0 (Build 339) November 2007

-----

- **Support for Exchange 2007 Hub Transport Server connectivity**
- **Automated reports**
- Support for JPEG & JPG file attachments.
- Fixed memory leak in msXDispatchRX, replace use of imagelib with leadtools.
- Adjusted the date time assigned to the audit RX and TX tif file name to be the same as the actual transmit and received time in the statistics table.
- Fixed bug in msXfaxout for ENotify to resize rendered tif file to correct dimensions for Dialogic Fax Card.
- Also catered for situation where if render of ENotify attachments fail they are failed back to the sender.
- Fixed bug in msXfaxout for Broadcast to recreate a fresh tif file for every new batch in a Broadcast transmission, previously tif files were concatenated for each batch in the transmission.
- Fixed problem that occurs when borlandmm.dll crashes during inserting records into Fax database, the result is that a record set comprising Store, Recipient and Attach records are not created completely. This will result in a stall situation occurring and records not being processed. This patch will delete Orphan Store, Recipient Attach and the associated tif file and requesting the sender to resubmit fax.

- Fixed bug in Broadcast module where an apostrophe in a recipient's name caused an insertintostore error.
- Fixed bug where rendering a pdf file causes temp files to be placed in the ..\modi spooler directory. On a Failure of a render these temp are not cleared out and could be used in a subsequent render. This has been fixed.
- Fixed a bug in msXfaxout.exe to stop hitting the Local Database every second to examine queue depths this has been extended to every minute.
- Fixed Bug in Export Local Database where Cache data was also exported when requested. When the CSV was imported cache data was re-created as non-cached data that could not be cleared by the clear cache function.
- Enhanced CSV2ADR to save adr files to the Desktop and changed the button on the adr browse to indicate a save rather than an open task is going to occur.
- Fixed bug in msxfaxInRX.exe to detect the occurrence of a blank CSID after invalid CSID characters are removed during inbound fax filename creation is occurring. If detected the flag CSIDNotSet is set
- Support keyword HKey-Local-Machine\ Better Network Services Group\msxfax XP\messenger\SplitInboundByPage that when set to 1 will split all inbound faxes into single pages and route them via the normal logic as individual emails.
- Support intelligent splitting up of inbound faxes into smaller multipage tif files based on the maximum tif file size configured. This should be aligned with the Exchange message size limit.
- Support Canon Image Real Capture (IRC). IRC will accept a multi-page tif files with special bar code separator pages in them and split them up accordingly into an output directory. MsXfax Image Real Capture service if configured will read this output directory and artificially create inbound fax transactions. These Fax transactions will follow normal processing.

In order to activate this functionality create a C:\irc.txt in the root of C:, run the msxsetup.exe and a new service msXfax Image Real Capture will be created. Once installed run msxfax console, select Global Fax Settings, select Special Handling of inbound Faxes, create a record in the database to route inbound faxes with a specific DDI assigned for IRC to a local directory. Make this directory the Input directory for IRC (see IRC Configuration).

Run Regedit and select HKEY\_Local\_Machine\Software\Better Network Services Group\msXfax XP\Image Real Capture Pickup. Set the Pickup Directory to the Output directory of Image Real Capture, set the CSID to what ever you prefer, and set the DDI to a new value that must not be the same as the DDI assigned to IRC. (A loop will occur if this is done). Start all services up.

Previous msXfax Software Release Notices (SRN) can be found at:

Note: Some builds did not come with a SRN.

Version 7.6 build 334 June 2007

[http://www.bnsgroup.com.au/bns/downloads/srn/srn\\_msxfax7v6b334.pdf](http://www.bnsgroup.com.au/bns/downloads/srn/srn_msxfax7v6b334.pdf)

Version 7.6 March 2007.

[http://www.bnsgroup.com.au/bns/downloads/srn/srn\\_msxfax7v6.pdf](http://www.bnsgroup.com.au/bns/downloads/srn/srn_msxfax7v6.pdf)

Version 7.5.1 June 2006

[http://www.bnsgroup.com.au/bns/downloads/srn/srn\\_msxfax7v5v1.pdf](http://www.bnsgroup.com.au/bns/downloads/srn/srn_msxfax7v5v1.pdf)



Version 7.0 October 2004

[http://www.bnsgroup.com.au/bns/downloads/srn/srn\\_msxfax7v5v1.pdf](http://www.bnsgroup.com.au/bns/downloads/srn/srn_msxfax7v5v1.pdf)



## 1.6 Upgrade notes and considerations

---

### 1.6.1 Before you start the upgrade

- Make a list of which msXfax services are currently disabled.
- Stop msXfax services.
- Backup your fax server

### 1.6.2 Upgrade Eicon Drivers

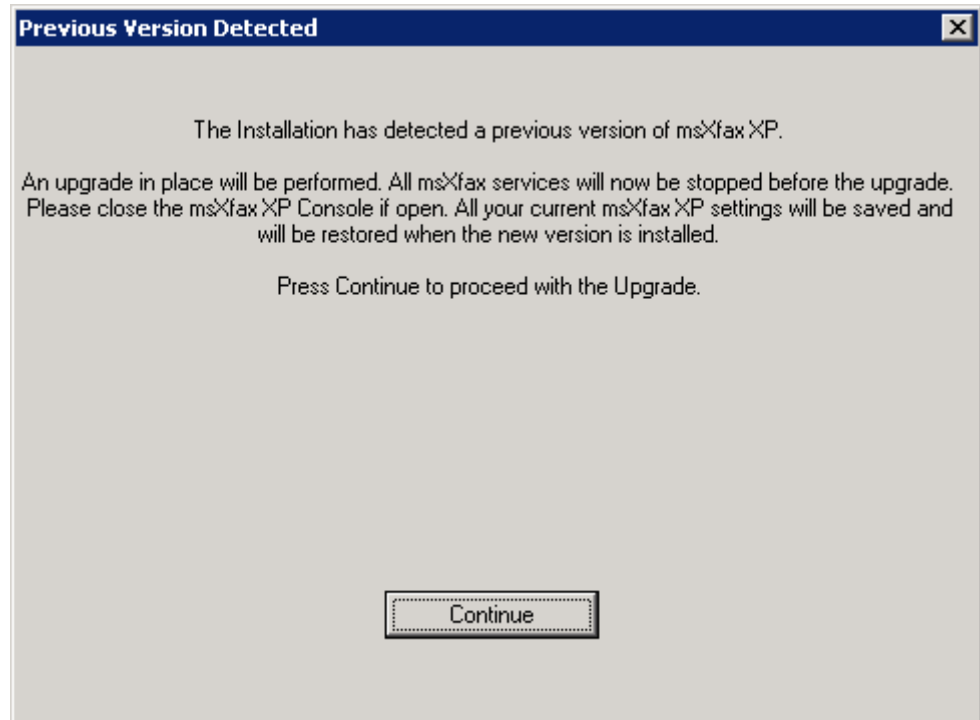
- To check which version you have:
  - Start, Programs, Diva Server for Windows, Diva Server Configuration Manager.
  - Select Help, About.
  - The version number is displayed in the About box.
- Customers should check with BNS if they are unsure if drivers should be updated.
- If necessary, upgrade to latest Eicon Diva Server drivers. Refer to msXfax installation guide. It is the same procedure as installing the original drivers.
- A reboot may be required.

### 1.6.3 Upgrade msXfax installation files

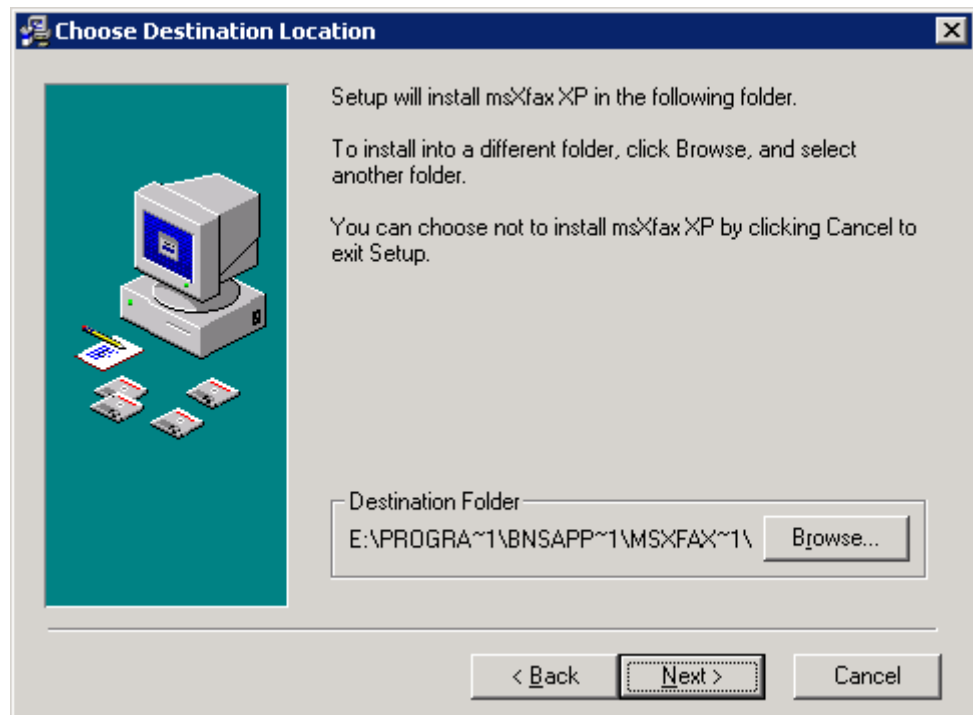
- Determine which drive letter the original installation files were installed.
- Navigate in Windows explorer to Program files\BNS Applications\Fax Server Installation Files. Note the driver letter and location.
- Download the INSTALLMSX.EXE file and copy it to any location on your fax server.
- Run the INSTALLMSX.EXE to refresh your installation files. Be sure to replace the existing files by specifying the current drive letter eg: E:\Program files\BNS Applications\Fax Server Installation Files

### 1.6.4 Upgrade msXfax with the MSXSETUP.EXE

- Close all program windows including the msXfax console program.
- Run MSXSETUP.EXE located in \Program files\BNS Applications\Fax Server Installation Files\Fax Software



- Press Continue
- Click next a few times, accept or reject the end user licence agreement
- Click next on the evaluation notice (make sure the check box is unchecked).



- Check that the installation Destination Folder is correct. Then select Next.
- Make sure that the Determine which drive letter the original installation files were installed.
- Accept all defaults presented on all subsequent set up screens because msXfax will retain all existing settings.

- Click FINISH
- Click CANCEL not to reboot the system
- Run Services.msc to review all services.
- Scroll down to the msXfax XP services.
- Set the selected services which were previously DISABLED back to DISABLED.
- Reboot your system
- Check all functions of your system.